

AUGUST 22-AUGUST 30, 2015

ELLEY-LONG MUSIC CENTER • FLYNNSPACE • ST. PAUL'S CATHEDRAL



Lake
Champlain
Chamber
Music
Festival

Soovin Kim
Artistic Director

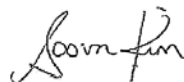
www.lccmf.org

SERENADE by Lynn Lou Nordstrom

WELCOME!

Dear Friend,

This year's festival, **Sounds of the Wind**, features an unusual all-star lineup of wind instrument players from around the world, including noted soloists as well as principal players from the Cleveland Orchestra, the Philadelphia Orchestra, the Metropolitan Opera Orchestra, and the Seattle Symphony. Together, we will celebrate the great chamber works written for various combinations of winds, strings, and piano, and will cap off our week with Mozart's magnificent wind serenade, the *Gran Partita*. A vocal recital, solo Bach performances, presentations about the development of wind composition, a Baroque evening, discussions with living composers, master classes – it promises to be another stimulating and deeply satisfying Lake Champlain Chamber Music Festival!



Soovin Kim, Artistic Director



Lake
Champlain
Chamber
Music
Festival



With the Lake Champlain Chamber Music Festival, Vermont is increasing its stature as one of this country's summer chamber music meccas.

– Jim Lowe
BARRE-MONTPELIER TIMES ARGUS

AUGUST 22–AUGUST 30, 2015

The nine-day 2015 Lake Champlain Chamber Music Festival presents a wonderful and diverse array of chamber pieces that feature wind instruments starting with the Brahms *Horn Trio* and ending with the Mozart *Gran Partita* for 12 winds and double bass.

The Festival consists of four major concerts, a noon vocal recital, two free solo Bach recitals hosted by Cathedral Arts at St. Paul's Cathedral, instrumental and chamber master classes, three seminars on music including a special event focusing on the work of Distinguished Visiting Composer Steven Mackey, premieres of works by our Young Composer Seminar participants, and a concert by our Young-Trio-in-Residence.

Lake Champlain Chamber Music Festival

Festival Artists

Robyn Bollinger, *violin*
Soovin Kim, *violin*
Wenting Kang, *viola*
Wen Hong Luo, *viola*
Deborah Pae, *cello*
Peter Stumpf, *cello*
Joseph Conyers, *double bass*
Kit Armstrong, *piano and composer*
Gloria Chien, *piano*
Gilles Vonsattel, *piano*
Randall Scarlata, *baritone*

Emi Ferguson, *flute*
Mary Lynch, *oboe*
Frank Rosenwein, *oboe*
Paul Demers, *clarinet*
Jose Franch-Ballester, *clarinet*
Romie de Guise-Langlois, *clarinet*
Carol McGonnell, *clarinet*
Daniel Matsukawa, *bassoon*
William Short, *bassoon*
Katherine Jordan, *horn*
Richard King, *horn*
Jennifer Montone, *horn*
Eric Ruske, *horn*
Radovan Vlatkovic, *horn*

David Ludwig, *Composer-in-Residence*
Steven Mackey, *Distinguished Visiting Composer*
Loren Loiacono, *Young Composer-in-Residence*
Cori Ellison, *Guest Speaker*
Ara Guzelimian, *Guest Speaker*
Alan Bise, *Recording Engineer*



FESTIVAL **OPENING** CONCERT *Elley-Long Music Center*



Sunday, August 23, 3:00 pm

The 2015 Festival performances begin with works by two of the great German masters and a third piece inspired by Bach's *Goldberg Variations*. LCCMF Composer-in-Residence David Ludwig's composition *Aria Fantasy* is a colorful, sonic description of dream images. VPR Classical, Vermont's Classical Music Station, will be broadcasting this concert live from Elley-Long.

Beethoven
D. Ludwig
Brahms

Piano Trio in B-flat, op. 11
Aria Fantasy
Horn Trio

Radovan Vlatkovic, *horn*, Robyn Bollinger, *violin*,
Soovin Kim, *violin*, Wenting Kang, *viola*, Deborah Pae, *cello*,
Gloria Chien, *piano*, and Gilles Vonsattel, *piano*

Concert Co-Sponsor:  WakeRobin
VERMONT'S CLASSICAL COMMUNITY

WWW.LCCMF.ORG • 802-846-2175

FESTIVAL **WEDNESDAY** CONCERT

FlynnSpace



Wednesday, August 26, 7:30 pm

This quartet of musicians came together at the Marlboro Festival in 2014 to explore the brilliant repertoire of the Baroque period. The intimacy and clarity of FlynnSpace is the perfect venue in which to enjoy this explosion of musical inspiration and invention from the 17th and 18th centuries.

Program to include:

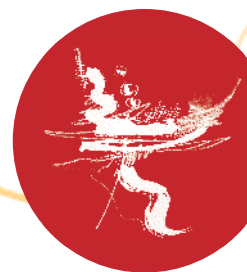
Telemann
Rameau

"Paris" Quartet in D
Pièces de clavecin en concert

Emi Ferguson, *flute*, Soovin Kim, *violin*,
Peter Stumpf, *cello*, and Kit Armstrong, *harpsichord*

Doors will open for Grand Festival Pass holders at 6:30pm. Come enjoy the FlynnSpace cash bar and socialize with other Festival patrons.

WWW.LCCMF.ORG • 802-846-2175



FESTIVAL **FRIDAY** CONCERT

Elley-Long Music Center



Friday, August 28, 7:30 pm

In these two joyous works of his early period, Beethoven creates a dazzling array of sound by combining chamber music, concerto, and orchestral textures. Our talented Young Composer alum from 2013, Loren Loiacono, responds with her own colorful instrumentation in her world premiere composition.

Beethoven	<i>Piano and Wind Quintet</i>
L. Loiacono	<i>World Premiere</i>
Beethoven	<i>Septet</i>

Mary Lynch, *oboe*, Frank Rosenwein, *oboe*,
Jose Franch-Ballester, *clarinet*, Romie de Guise-Langlois, *clarinet*,
Daniel Matsukawa, *bassoon*, William Short, *bassoon*, Richard King, *horn*,
Jennifer Montone, *horn*, Soovin Kim, *violin*, Wenting Kang, *viola*,
Peter Stumpf, *cello*, Joseph Conyers, *double bass*, and Gilles Vonsattel, *piano*

Concert Underwriter: 
SEQUOIA
FINANCIAL GROUP
WWW.LCCMF.ORG • 802-846-2175

Reception Underwriter:

dinse
dinse-xnapp-andrew

FESTIVAL **CLOSING** CONCERT

In Honor of Ann B. Emery

Elley-Long Music Center



Sunday, August 30, 3:00 pm

The final concert of the Festival focuses on two substantial yet delightful Mozart pieces that demonstrate why he is still considered the master of wind textures. The 20th-century Hungarian master György Ligeti provides chromatic relief with beauty, humor, and cacophony.

Mozart
Ligeti
Mozart

Clarinet Trio in E-flat (Kegelstatt)

Six Bagatelles for wind quintet

Wind Serenade in B-flat (Gran Partita)

Emi Ferguson, *flute*, Mary Lynch, *oboe*, Frank Rosenwein, *oboe*,
Jose Franch-Ballester, *clarinet*, Carol McGonnell, *clarinet*,
Paul Demers, *basset horn*, Romie de Guise-Langlois, *basset horn*,
Daniel Matsukawa, *bassoon*, William Short, *bassoon*,
Katherine Jordan, *horn*, Richard King, *horn*,
Jennifer Montone, *horn*, Eric Ruske, *horn*, Wenting Kang, *viola*,
Joseph Conyers, *double bass*, and Kit Armstrong, *piano*

Concert and Reception Sponsor: THE ANN B. EMERY FOUNDATION

WWW.LCCMF.ORG • 802-846-2175

DAVID LUDWIG'S INSIDE PITCH *Elley-Long Music Center*



Interact with composer and Curtis Institute educator David Ludwig as he explores the music of this year's Festival. Meet fellow Festival patrons during these illuminating and engaging sessions.

Festival Monday, August 24, 10:30 am

The Winds of Beethoven

Festival Tuesday, August 25, 3:00 pm

The Winds of Mozart

Festival Thursday, August 26, 3:00 pm

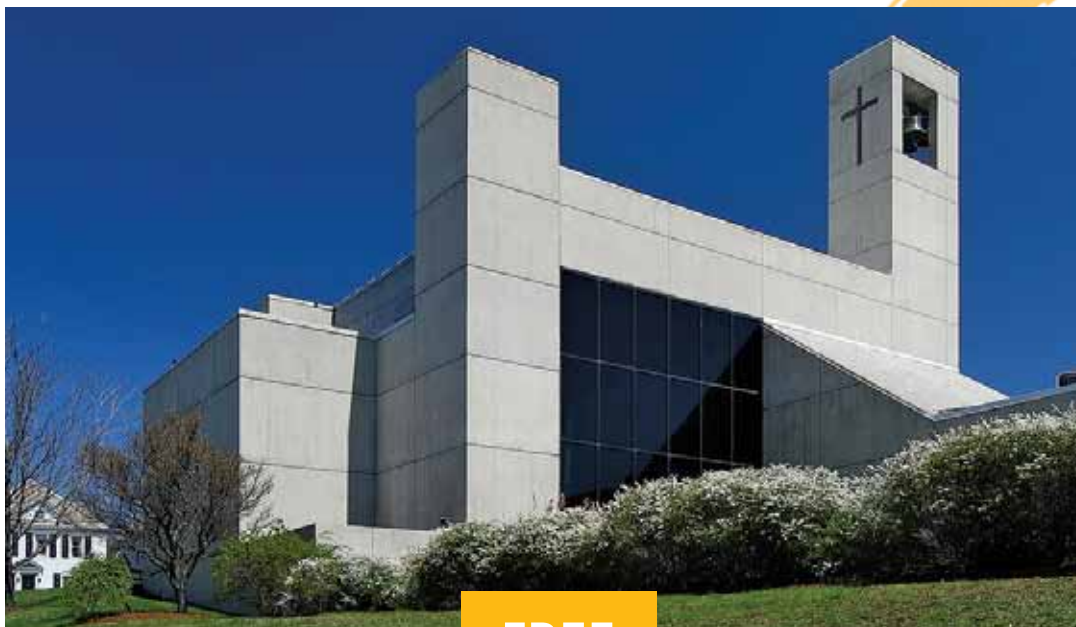


Special Festival Event: *The Music of Steven Mackey*

A discussion with our Distinguished Visiting Composer Steven Mackey, one of the most important composers of his generation. This Inside Pitch will include a performance by Robyn Bollinger of his solo violin work *Interior Design*.

BACH IN CHURCH

St. Paul's Cathedral, Burlington
hosted by Cathedral Arts



FREE

Hear music of Bach and others at wonderful St. Paul's Cathedral overlooking Lake Champlain in Burlington – a great place to be on a summer afternoon in Vermont.

Tuesday, August 25, 12:15 pm

Deborah Pae, *cello*

Bach
Bach

Suite No. 5 in c
Suite No. 2 in d

Thursday, August 28, 12:15 pm

Wenting Kang, *viola*

Telemann
Bach
Ligeti

Fantasia No. 5
Partita No. 1 in e
Sonata



Concerts Underwriter:

Vermont Violins & BURLINGTON VIOLIN SHOP

WWW.LCCMF.ORG • 802-846-2175

NOON ON STAGE



Monday, August 24

Randall Scarlata and Gloria Chien's performance of Schubert's song cycle *Die Winterreise* was the emotional highlight of the 2014 LCCMF. Their encore performance this year, Schumann's *Dichterliebe* (*A Poet's Love*), will again be preceded by a discussion of the poetry and music by noted dramaturg Cori Ellison.

Schumann

Dichterliebe

Randall Scarlata, *baritone*, and Gloria Chien, *piano*
Commentary by Cori Ellison



FROM THE EXECUTIVE DIRECTOR



What makes the Lake Champlain Festival unique? Our audience members respond to this question with the words *community*, *engagement*, and *excellence*. They refer consistently to the opportunity to immerse themselves in a community of artists, students and music lovers; to engage all aspects of the music; and to experience excellence in programming, performance and educational initiatives.

Of course, ticket revenue covers only a fraction of our costs. With strong financial support, we have brought the finest musicians to Vermont every summer. These gifts have allowed us to keep ticket prices affordable, to present two free concerts as part of every Festival, and to expand our educational activities.

We rely on you! Please consider including a donation with your ticket purchase this year.

Jody Woos

First Festival Saturday, August 22

11:00 am Violin, Cello and Horn Master Classes

What goes into making a good performance great?
Join us to hear some of Vermont's finest young musicians being coached by Festival Artists.

1:30 pm A Breath of Music

Ara Guzelimian, *Provost and Dean, The Juilliard School*
Radovan Vlatkovic, *horn*

There is a special place in chamber music for the uniquely individual voice of wind instruments. This presentation, with generous musical illustrations, explores the glorious tradition of wind chamber music from Mozart and Brahms to Messiaen.



3:00 pm Opening Festival Reception

Join Soovin Kim and the Festival Board as they welcome you to this summer's Festival. Meet this year's young composers and young trio-in-residence, while gathering to celebrate the beginning of the Festival week.

Second Festival Saturday, August 29

11:00 am Young Trio-in-Residence Concert

Beethoven *String trio in c, op. 9, no. 3*

1:30 pm Kit Armstrong On Stage

The remarkable pianist, composer, and mathematician Kit Armstrong was described by the legendary pianist Alfred Brendel as the greatest talent he has ever encountered. During this 75 minute performance Kit Armstrong will demonstrate his virtuosity as a soloist, his love of collaboration, and his inventiveness as a composer. Kit will be joined by Emi Ferguson, *flute*, Soovin Kim, *violin*, and Deborah Pae, *cello*.

3:00 pm Sounding Board

Join us as Festival Artists read and record world premiere compositions by the 2015 Young Composers.

THE LCCMF & EDUCATION

The Festival's educational programs exist at its very heart. The Young Composers Seminar was launched with the first Festival in 2009; ONE Strings followed in 2013; and the Young Performers Residency in 2014.

Young Composers Seminar

Under the direction of Festival composer-in-residence David Ludwig, the Young Composers Seminar brings together some of the country's most outstanding young composers. They are immersed in the culture of the Festival, interacting with the Festival staff, musicians, donors and audience members. Admission to the Seminar is by invitation. Each young composer creates a new work for the Festival, which is read by Festival artists at the Sounding Board on Saturday, 8/29 at 3:00pm.

Young Trio-in-Residence

Our residency program creates an opportunity for a young chamber music ensemble, this year a string trio, to be in residence during the Festival itself and to return during the 2015-16 season for performances and community workshops. Like our Young Composers, the Young Trio will be fully engaged in all aspects of the Festival. They will have two public chamber coachings by Festival artists on Tuesday and Thursday afternoons at 4:30 pm and will then perform for Festival audiences on the final Saturday, 8/29 at 11:00 am.



ONE Strings

ONE Strings provides in-school group violin instruction and related activities to every 4th and 5th grader at the Integrated Arts Academy (IAA, formerly the H.O. Wheeler School) in the



Old North End of Burlington. A collaboration between the Festival, IAA and the Vermont Youth Orchestra Association, ONE Strings is based on the *El Sistema* worldwide music education movement.

The staff and board of the Festival are deeply committed to ONE Strings as a key part of fulfilling our mission to our community.



This is the most rewarding musical project in my life; I imagine that ONE Strings will have potent long-term ramifications for those students' lives. – SOOVIN KIM

SOUNDS OF THE WIND

FESTIVAL CALENDAR

AUGUST

SUNDAY	MONDAY	TUESDAY	WEDNESDAY	THURSDAY	FRIDAY	SATURDAY
						22 Master Classes Ara Guzelimian Reception
23 Festival Opening Concert Reception	24 <i>Inside Pitch</i> Noon OnStage	25 Bach in Church <i>Inside Pitch</i> Young Trio Master Class	26 Festival Wednesday Concert	27 Bach in Church <i>Inside Pitch</i> Young Trio Master Class	28 Festival Friday Concert Reception	29 Young Trio Concert Kim Armstrong On Stage Sounding Board
30 Festival Closing Concert Closing Reception						



Elley-Long Music Center at
 St. Michael's College
 223 Ethan Allen Avenue,
 Colchester

DIRECTIONS TO THE VENUES

ELLEY-LONG MUSIC CENTER

Enter Fort Ethan Allen off of Route 15. Take the second right onto Ethan Allen Avenue. Elley-Long is the 5th building on the left, diagonally across from Vermont Public Television. Park behind the building.



Cathedral Church of St. Paul
 2 Cherry Street, Burlington

CATHEDRAL CHURCH OF ST. PAUL

Just a few blocks west of Church Street Marketplace, at the corner of Cherry and Battery Streets. Parking available in the Church lot, with entrance on Cherry Street.



FlynnSpace
 153 Main Street, Burlington

FLYNNSPACE

Flynn Center for the Performing Arts, 153 Main Street, Burlington. Located next door to the Flynn Center entrance on Main Street in downtown Burlington.

2015 **TICKET INFORMATION**



Festival Subscription Passes

Grand Festival Pass: \$175 each

Completely immerse yourself in the 2015 Festival with the Grand Festival Pass. Includes admission to all events, every day of the Festival, including four major concerts, David Ludwig's *Inside Pitch Series*, *Noon OnStage*, all master classes, and both Festival Saturdays.



Or, Purchase Events Separately

Four Major Concert tickets: \$30 each

Other Festival Days: \$20 each

Each ticket gives you admission to one Festival Day: Saturday, 8/22; Monday, 8/24; Tuesday, 8/25; Thursday, 8/27; or Saturday, 8/29.

NOTE: BACH IN CHURCH events are **FREE** and are not ticketed with the Festival Passes or daily tickets.

Grand Festival Passes and single tickets are **ONLY** available through the Flynn Center Box Office.

Mail in your order form to the Flynn, visit www.flyntix.org, or call **802.86-FLYNN**.



Brochure by Futura Design, Shelburne.

2015 **TICKET ORDER FORM**



Subscriber Information *(Please print!)*

NAME _____

ADDRESS _____

CITY / STATE / ZIP _____

PHONE _____ E-MAIL _____

Please make checks payable to FlynnTix and mail to FlynnTix, 153 Main Street, Burlington, VT 05401

	HOW MANY	x		=	\$\$
Grand Festival Pass \$175 ea.	_____	x	\$175	=	_____

Single Concert Tickets \$30 ea.					
Festival Opening Concert, Sunday, August 23	_____	x	\$30	=	_____
Festival Wednesday Concert, Wed., August 26	_____	x	\$30	=	_____
Festival Friday Concert, Friday, August 28	_____	x	\$30	=	_____
Festival Closing Concert, Sunday, August 30	_____	x	\$30	=	_____

Single Day Passes \$20 ea.					
First Festival Saturday, August 22	_____	x	\$20	=	_____
Festival Monday, August 24	_____	x	\$20	=	_____
Festival Tuesday, August 25	_____	x	\$20	=	_____
Festival Thursday, August 27	_____	x	\$20	=	_____
Second Festival Saturday, August 29	_____	x	\$20	=	_____

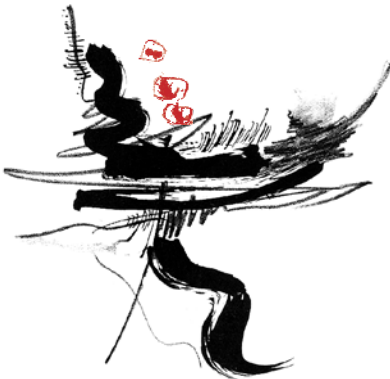
SUBTOTAL _____

Flynn Service Fee: add \$7 for 1-5 items _____

add \$10 for 6+ items _____

TAX DEDUCTIBLE CONTRIBUTION _____

TOTAL ENCLOSED _____



ENGAGE THE MUSIC

SUMMER FESTIVAL HIGHLIGHTS

- Exploration of Chamber Music for Winds, Strings, and Piano
- Schumann's *Dichterliebe*
- Work of Distinguished Composer Steven Mackey
- Mozart's *Gran Partita* for 12 winds plus double bass



Thank you to Vermont artist Lyna Lou Nordstrom for graciously sharing with us her monotype, *Serenade*. You will see elements of *Serenade* on our posters, brochures and program book throughout the 2015 season. This is the second in an annual series that will bring the visual arts and music together.

ARTIST BIOS AND MORE DETAILS AVAILABLE AT WWW.LCCMF.ORG